

N=22°55'29.9778"
E=88°23'53.43623"
N=22°55'29.2497"
E=88°23'54.42264"
N=22°55'29.454"
E=88°23'54.13056"

N=22°55'28.6941"
E=88°23'53.5183"
N=22°55'28.19947"
E=88°23'53.09435"

N=22°55'28.26555"
E=88°23'52.98843"
N=22°55'29.65254"
E=88°23'52.88946"

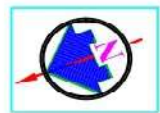
N=22°55'29.07469"
E=88°23'53.27208"
N=22°55'29.39122"
E=88°23'52.72712"

N=22°55'30.9318"
E=88°23'51.10311"
N=22°55'29.62568"
E=88°23'51.81191"
N=22°55'29.34988"
E=88°23'52.37981"

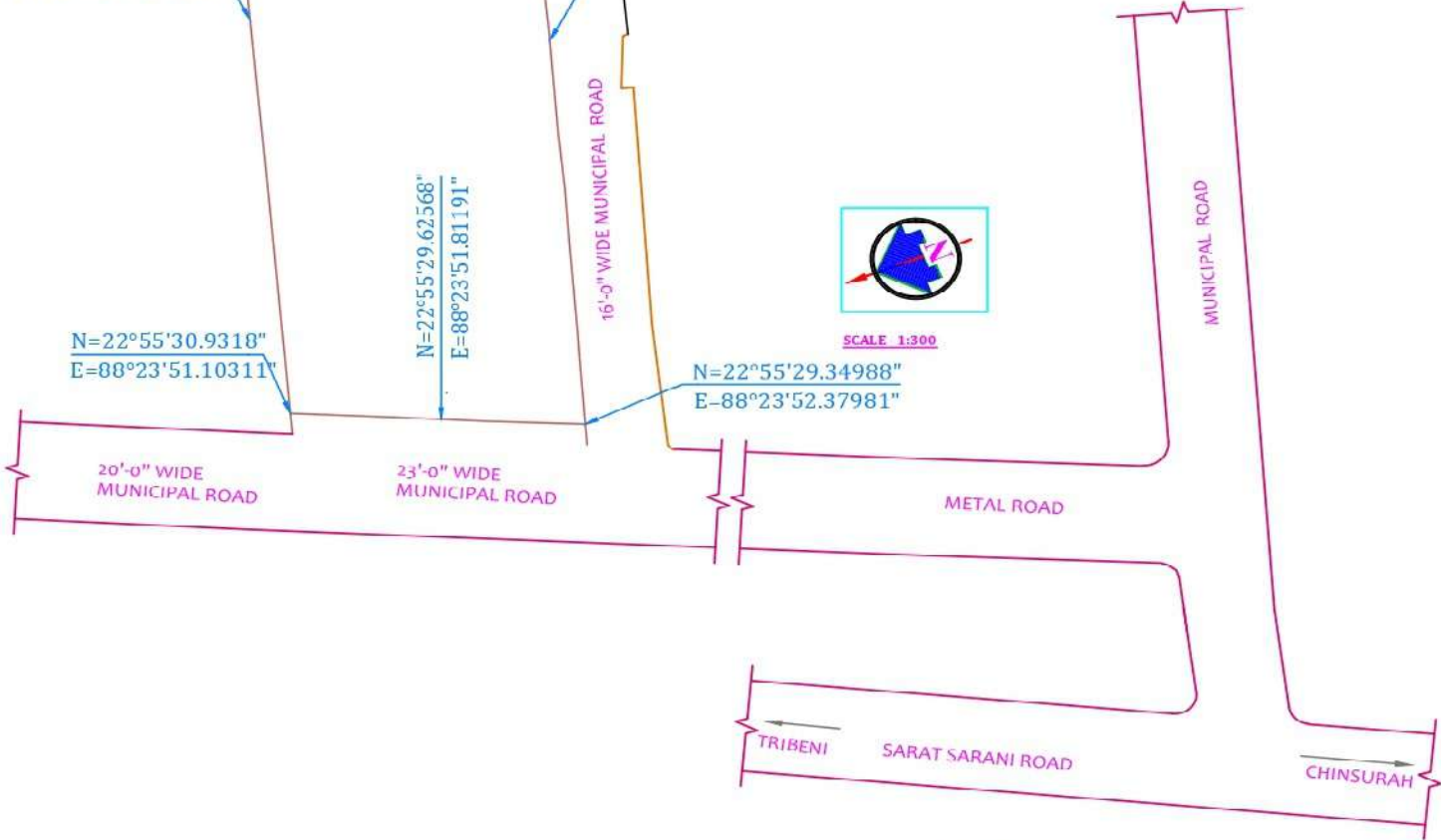
PROJECT SITE
R.S. DAG NO. - 1264
L.R. DAG NO. - 2548
LAND AREA - 761 SQ.M

FUTURE PROVISION
R.S. DAG NO. - 1878
L.R. DAG NO. - 2545
LAND AREA - 1170 SQ.M

SITE PLAN SHOWING THE LOCATION DETAILS OF THE PROPOSED PROJECT SITUATED AT MOUJA - BALAGARH, JL NO-08, R.S DAG NO. - 1878, 1264, L.R DAG NO. - 2545, 2548, L.R. KHATIAN NO. - 3722, 3723, 3724, HOLDING NO.- 568/494, MOHALLA - BALAGARH, IN WARD NO - 03, UNDER HOOGHLY CHINSURAH MUNICIPALITY, P. S. - CHINSURAH, DIST.- HOOGHLY, PIN-712104.



SCALE 1:300



For Satyam Construction Pvt. Ltd.



(B. R. Das)
Director

SIGNATURE OF OWNER